

TekExpress™ Serial ATA Automated Compliance Solutions Installation Manual



077-0143-00

**TekExpress™ Serial ATA
Automated Compliance Solutions
Installation Manual**

Copyright © Tektronix. All rights reserved. Licensed software products are owned by Tektronix or its subsidiaries or suppliers, and are protected by national copyright laws and international treaty provisions.

Tektronix products are covered by U.S. and foreign patents, issued and pending. Information in this publication supersedes that in all previously published material. Specifications and price change privileges reserved.

TEKTRONIX and TEK are registered trademarks of Tektronix, Inc.

Contacting Tektronix

Tektronix, Inc.
14200 SW Karl Braun Drive
P.O. Box 500
Beaverton, OR 97077
USA

For product information, sales, service, and technical support:

- In North America, call 1-800-833-9200.
- Worldwide, visit www.tektronix.com to find contacts in your area.

Table of Contents

Preface 1

 Getting Started 1

 Disk Browser 2

Product Description 3

 Install Requirements 4

 Run Time Requirements 5

 Copying AWG Setup and Real-Time Oscilloscope Setup Files 5

TekExpress Installation Procedure 7

Keithley Sys46 Driver Installation 12

Uninstalling TekVISA Manually 17

Custom Installation 20

Launching the Application and Online Help 24

Uninstalling TekExpress 25

Preface

The guide contains installation information and the system requirements for the TekExpress Serial ATA software. This manual is intended for users who have already purchased the software and are ready to install it.

Getting Started

The TekExpress Serial ATA Software Install Disk contains a Disk Browser that allows you to view helpful information on how to install the software.

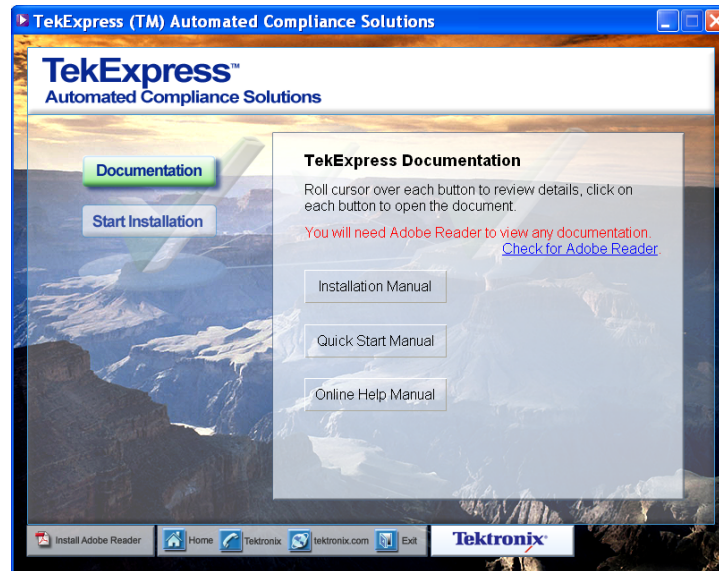
The Welcome screen and other navigation screens are provided in the Disk Browser to share important information for installing TekExpress Serial ATA onto your system.

If you have to exit the Disk Browser at any time, you can restart the browser by using either of the two options:

- Reinsert the TekExpress Serial ATA software Install Disk into the DVD-ROM drive.
- Double-click the `Launch.exe` file in the root folder of the TekExpress Serial ATA installation location.

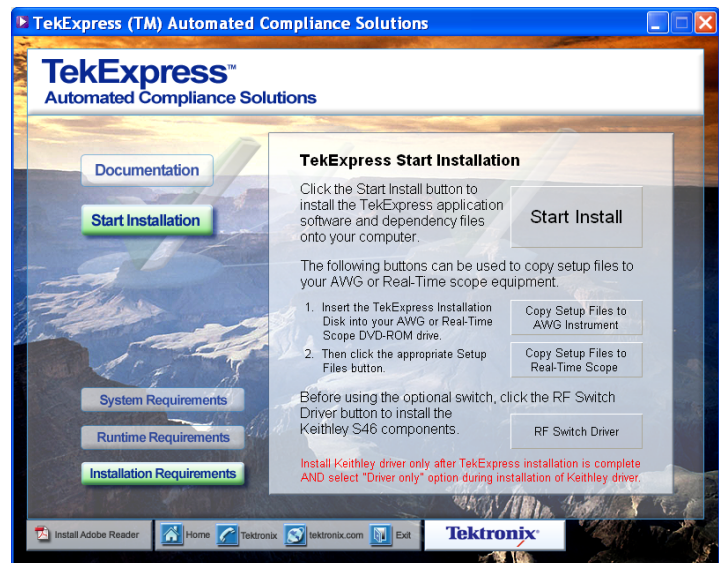
Disk Browser

The manuals are provided on the TekExpress Application Disk Browser. To browse through the manuals, click **Documentation**.



The Documents directory on the Install Disk contains the user manuals for TekExpress in PDF format (TekExpressUserManual.pdf, TekExpressIM.pdf, and TekExpressQSUM.pdf). You can read and print the manuals using Acrobat Reader version 5.0 or greater.

Mouse-over other controls appropriately to see System requirements, Run time requirements, and Install requirements under **Start Installation**.



Product Description

TekExpress is a Tektronix Compliance Test Automation Framework, developed to support current and future test automation needs of customers. Developed using the National Instruments® TestStand, the framework leverages the capabilities of Microsoft .NET framework. TekExpress has a highly modular architecture that enables deploying automated test solutions for various serial standards in a relatively short time. TekExpress provides a compliance test automation solution for the Serial ATA Gen 1 and Gen 2 standards.

Install Requirements

To install and use the TekExpress software, your system should meet the following minimum requirements:

Table 1: Minimum system requirements

Processor	Pentium 4/M or equivalent processor
Operating System	Windows XP Service Pack 2
Memory	1 GB of memory (512 MB minimum)
Hard Disk	Approximately 2 GB of available hard-disk space for the recommended installation which includes full TekExpress installation and distributed components.
Drive	DVD-ROM drive
Display	Super VGA resolution or higher video adapter (800x600 minimum video resolution for small fonts or 1024x768 minimum video resolution for large fonts). The application is best viewed in 96 dpi display settings.
Software	<ul style="list-style-type: none">■ IConnect® and MeasureXtractor™ Signal Integrity TDR and S-parameter Software (80SICON) Ver 4.0 or above■ Microsoft Excel 2002 or above■ Microsoft Internet Explorer 6.0 SP1 or later■ Microsoft Photo Editor 3.0 or equivalent software for viewing image files■ Adobe Reader 5.0 or equivalent software for viewing portable document format (PDF) files
Other Devices	<ul style="list-style-type: none">■ Microsoft compatible mouse or compatible pointing device.■ Four USB ports (2 USB ports minimum).■ PCI-GPIB or equivalent interface for instrument connectivity.¹

¹ If TekExpress is installed on a Tektronix oscilloscope, the virtual GPIB port cannot be used by TekExpress for communicating with oscilloscope applications. If external devices like USB-GPIB or equivalent is used for instrument connectivity, then ensure that the Talker Listener utility is enabled in DPO/DSA oscilloscope's GPIB menu.

NOTE. *You need to have administrative privileges while installing TekExpress application and its dependent software components.*

Run Time Requirements

The following are the run time requirements for TekExpress:

Table 2: Run time requirements

Resource	Model supported
Signal Source	Tektronix AWG7102 (Option 6)
Real Time Oscilloscope	<ul style="list-style-type: none"> ■ Tektronix DPO/DSA72004, DPO/DSA71604, DPO/DSA71254, TDS6154C, TDS6124C ■ For Gen1-only testing, the following oscilloscopes are also acceptable: DPO/DSA70804 or TDS6804B
Sampling Oscilloscope	Tektronix CSA/TDS/DSA 8200 with 80E04 modules (two for RxTx and four for SI)
RF Switch	Keithley S46
Frame Error Analyzer	Crescent Heart Software SATA II probe adapter
Test Fixture	Crescent Heart Software Fixture TF-SATA-NE-ZP, TF-SATA-FE-ZP
DUT	A SATA Drive or Host to test

Copying AWG Setup and Real-Time Oscilloscope Setup Files

The **Copy Setup Files to AWG Instrument** option allows you to copy AWG setup files onto your AWG instrument. These setup files are required by TekExpress for SATA testing. To copy the files to the AWG, do the following:

1. Insert the TekExpress Installation Disk into the DVD-ROM drive of an AWG instrument.
2. Select **Start Installation**, and select **Installation Requirements**.
3. Click **Copy Setup Files to AWG Instrument**.
4. A command window appears. Read the instructions and press any key to continue.

**Copy Setup Files to
Real-Time Scope**

The **Copy Setup Files to Real-Time Scope** option allows you to copy real-time oscilloscope setup files onto your real-time oscilloscope. These setup files are required by TekExpress for SATA testing. To copy the files to the real-time oscilloscope, do the following:

1. Insert the TekExpress Installation Disk into the DVD-ROM drive of a Real-time oscilloscope.
2. Select **Start Installation**, and select **Installation Requirements**.
3. Click **Copy Setup Files to Real-Time Scope**.
4. A command window appears. Read the instructions and press any key to continue.

NOTE. *When you choose a setup file option, the install DVD must be inserted in the appropriate instrument type for SATA testing to work successfully. If the install DVD is in a desktop or laptop PC, files will be copied onto the particular PC, not to the appropriate instrument.*

TekExpress Installation Procedure

This section describes how to install the TekExpress application for the first time using the TekExpress Serial ATA Disk Browser.

The following applications and drivers are part of TekExpress Installation:

- Adobe Reader 8.1
- Microsoft .NET Framework 2.0
- NI TestStand Engine 3.5.0.725
- NI LabView Run-time engine 8.2
- OpenChoice TekVisa 3.3.0.14
- TekScope IVI Shared Components 1.4.0
- TekScope IVI-COM Drivers 2.5
- TekFgen IVI Driver 1.0.0.20
- Sampling Scope PnP Drivers 2.9
- Keithley RF Switch S46 PnP
- MATLAB Component Runtime 7.6
- DK2 Deskey Driver 6.21.0.169
- TekExpress SATA

NOTE. *You may choose to install these components manually by browsing “software” folder on the DVD. If you prefer to do a manual installation of these components, then it is recommended that you follow the order mentioned above and then install TekExpress.*

Do the following to install the TekExpress software:

1. Insert the TekExpress DVD into the DVD-ROM drive.
2. Start the installation using the auto-run disk browser. Alternatively, you can copy the disk contents to a local system drive and execute the `Launch.exe` from the root location of the install files. The following browser screen is displayed.



3. Select **Start Installation** and then **Installation Requirements** to display the **TekExpress Start Installation** browser page. Click **Start Install** to begin the installation.

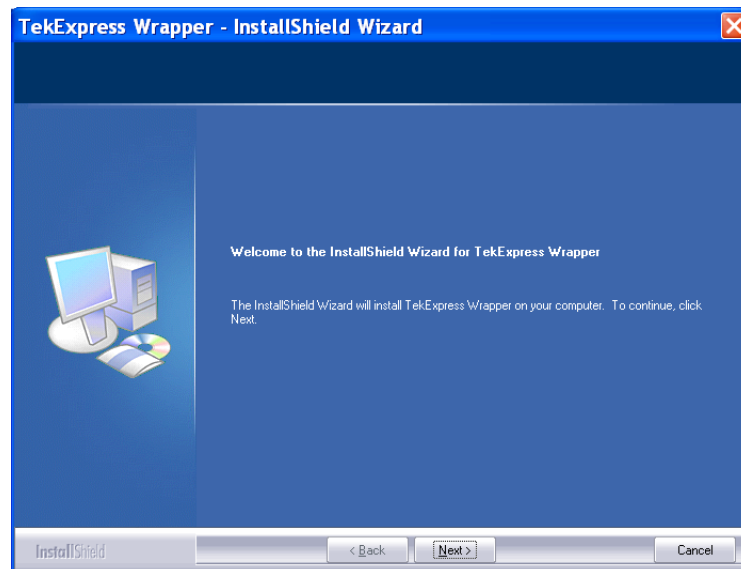


NOTE. If TekExpress is previously installed on your computer, refer to section on how to proceed further. Refer to Custom Installation(See page 20, Custom Installation.)

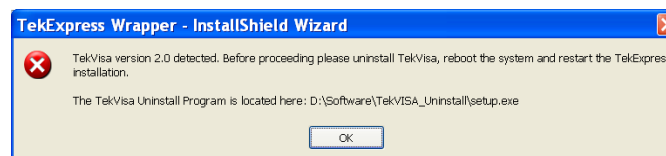
4. The installer prompts you to close all running programs before continuing with the installation. Click OK in the following dialog box.



5. In the **Welcome** screen for TekExpress wrapper, click **Next** to continue.

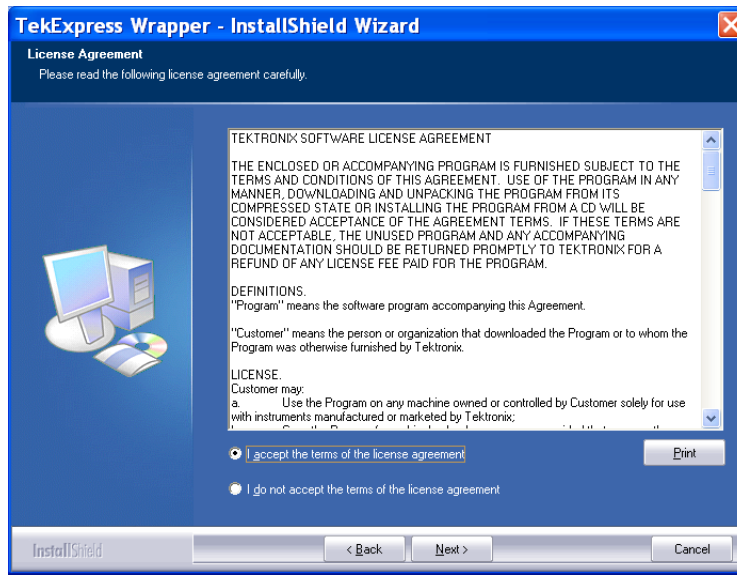


If the installer detects a version of TekVISA older than 3.3.0.14, it gives the following message and exits without installing.

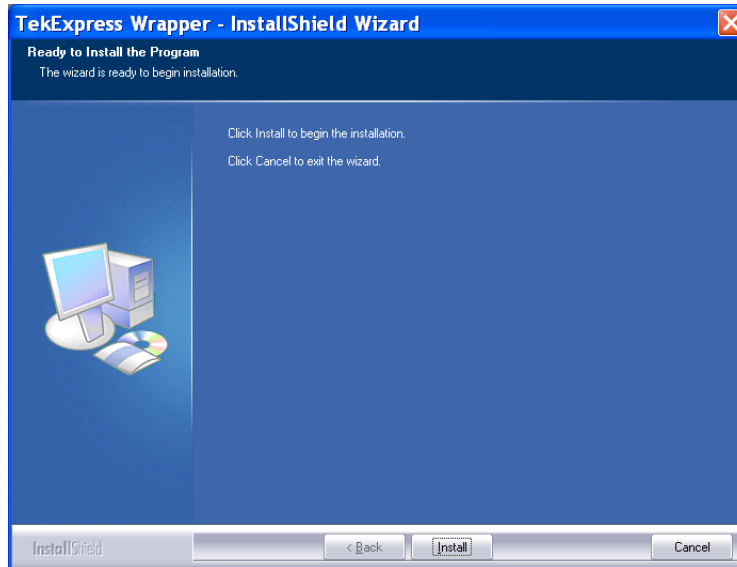


You should uninstall TekVISA manually before re-starting the installation.(See page 17, *Uninstalling TekVISA Manually.*)

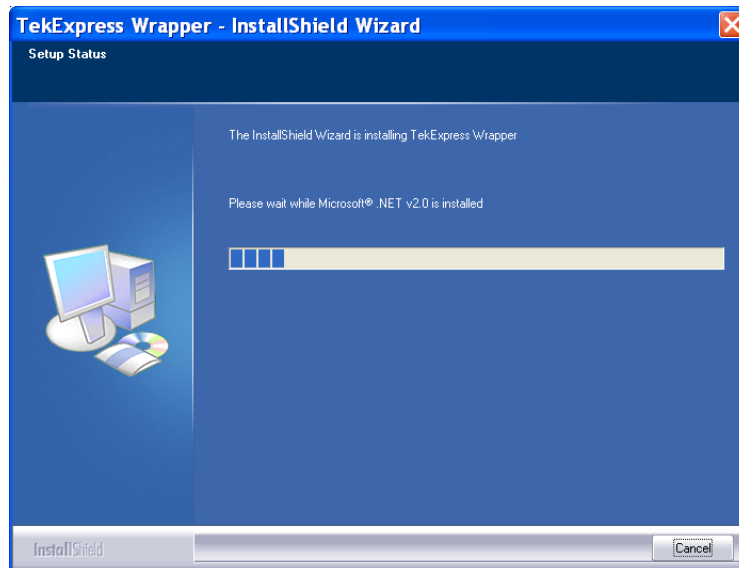
6. Read the license agreement carefully and choose **I accept the terms of the license agreement.** Click **Next** to continue.



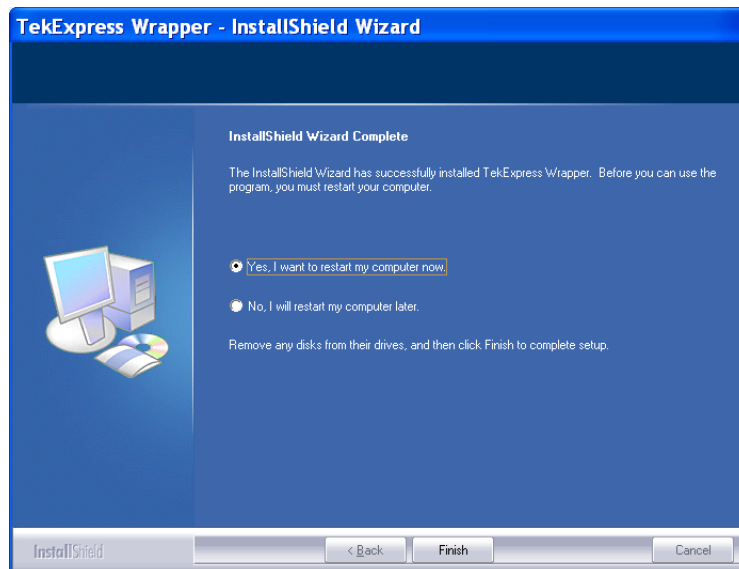
7. In the **Ready to Install the Program** screen, click **Install** to begin the installation.



8. The **Setup Status** screen displays the progress of all the installer components.



9. In the **InstallShield Wizard Complete** screen, retain the default settings and click **Finish** to complete the setup.



Keithley Sys46 Driver Installation

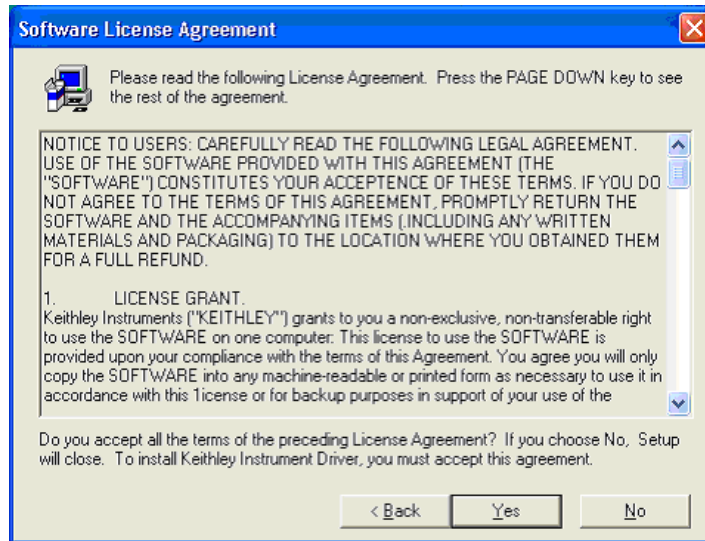
Click **RF Switch Driver** in the browser screen to begin the installation.



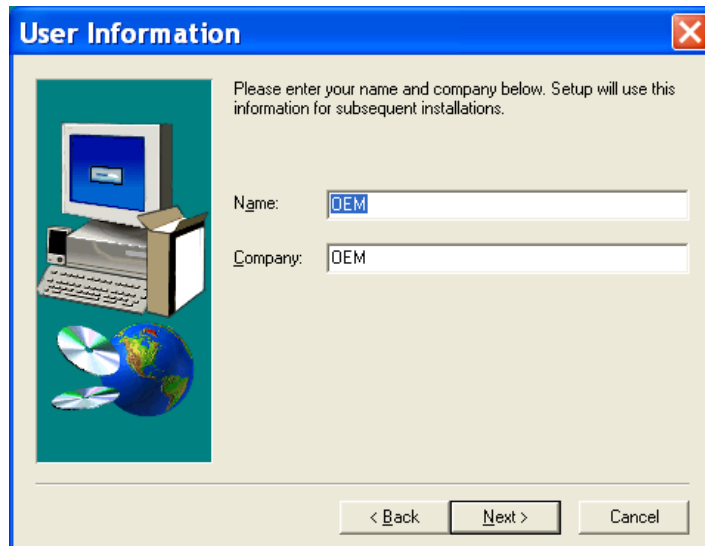
1. In the Welcome screen of Keithley Sys46 Driver, click **Next** to begin the installation.



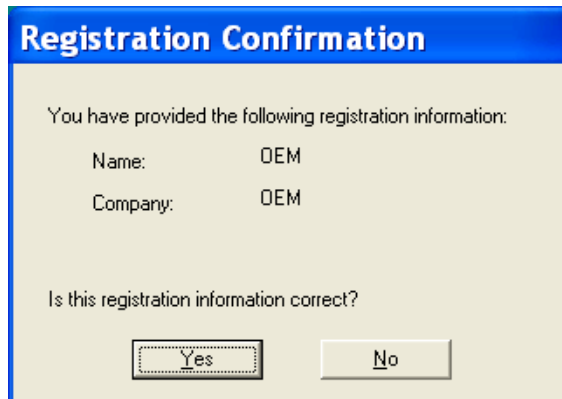
2. Click **Yes** in the **Software License Agreement** screen.



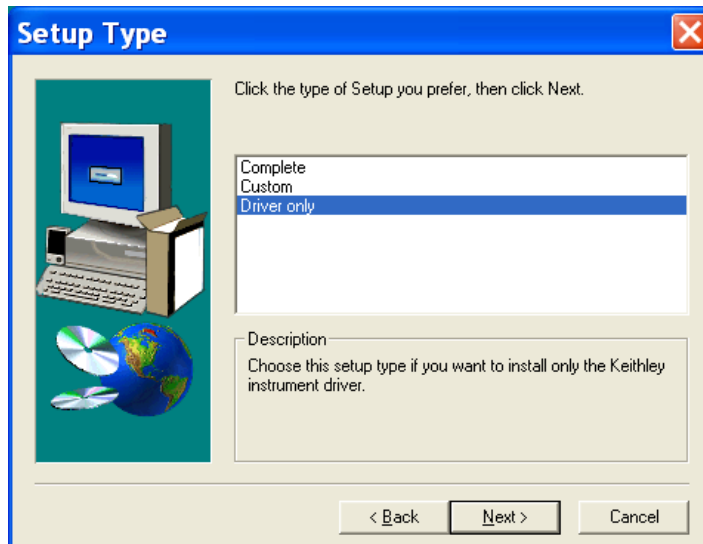
3. Enter the User information and click **Next** to proceed.



4. Click **Yes** to confirm the software registration settings in the dialog box.



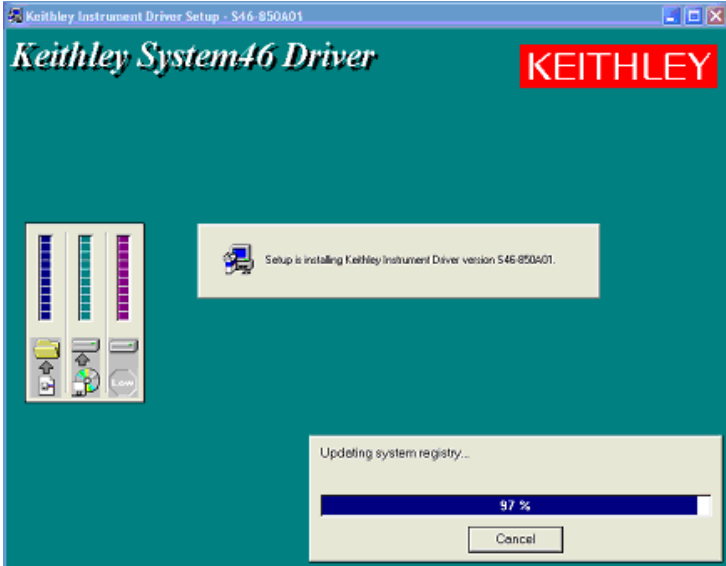
5. In the Setup Type window, select the **Driver only** option and click **Next** to proceed.



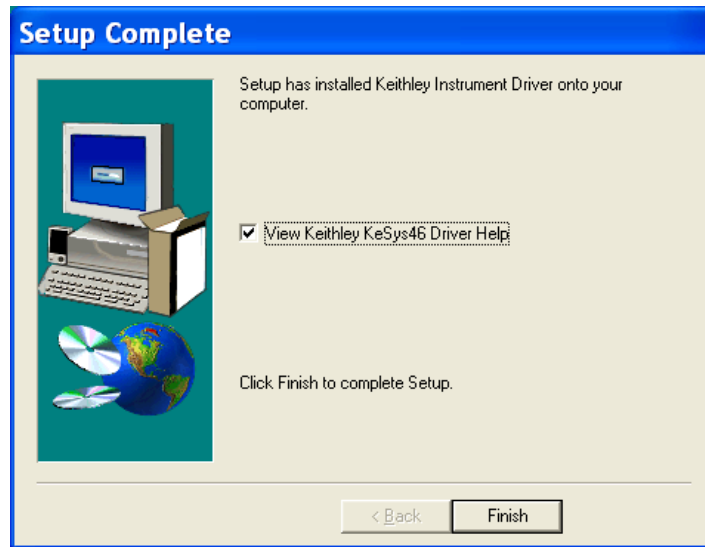
6. Select the program folder, retain the default setting and click **Next** to continue.



The installation progress is displayed.



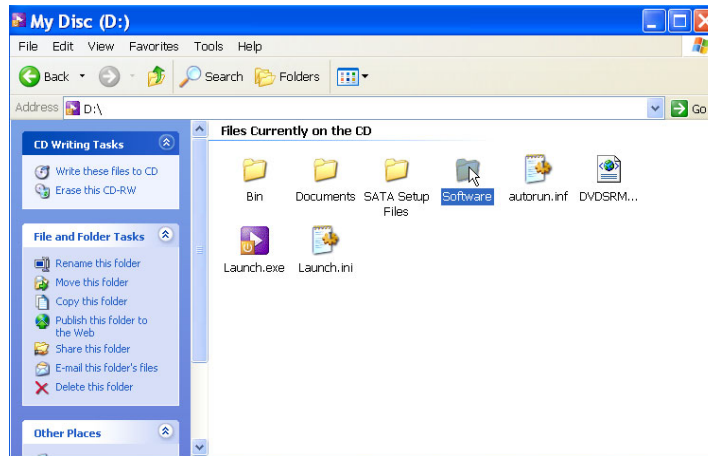
7. Click **Finish** in the **Setup Complete** dialog box.



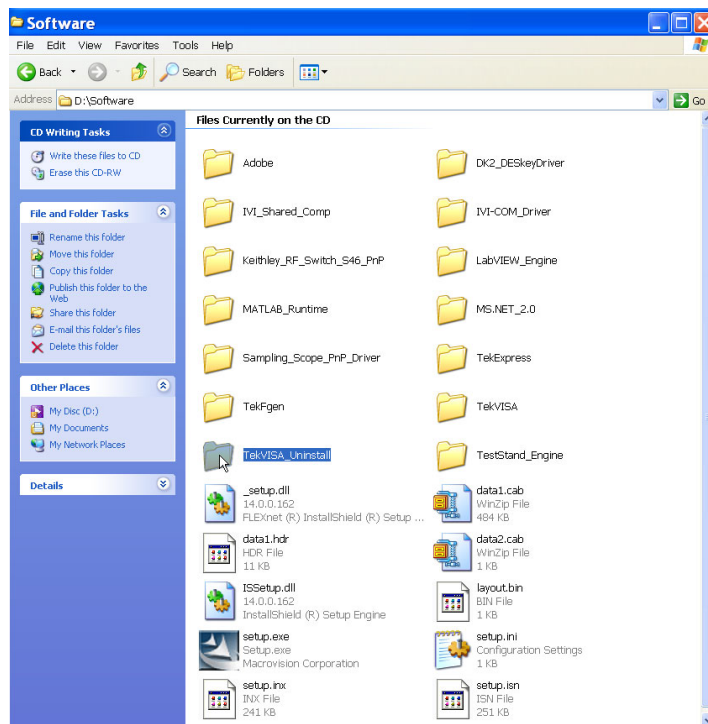
Uninstalling TekVISA Manually

Follow these steps to uninstall TekVISA:

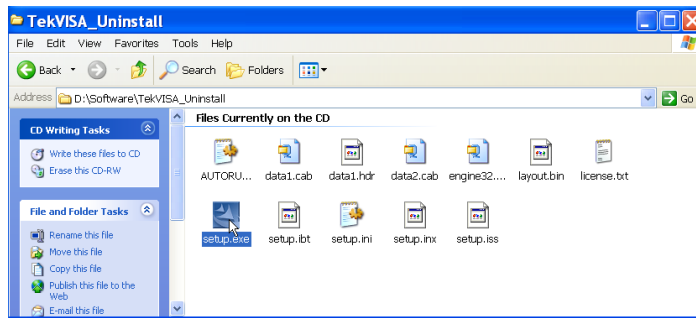
1. Go to the DVD location from the Windows explorer. Open the **Software** folder.



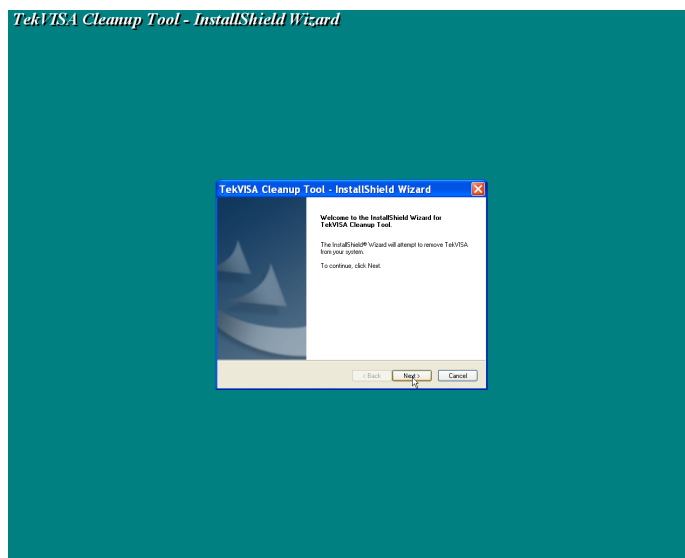
2. In the **Software** folder, open **TekVISA_Uninstall** folder.



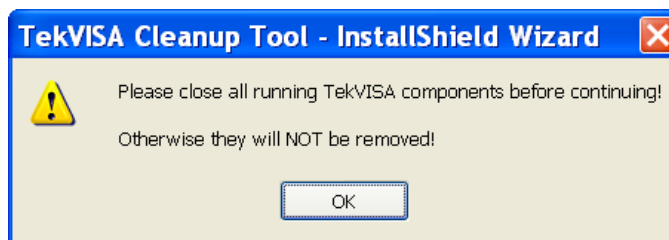
3. Double click `Setup.exe` to run the uninstall executable.



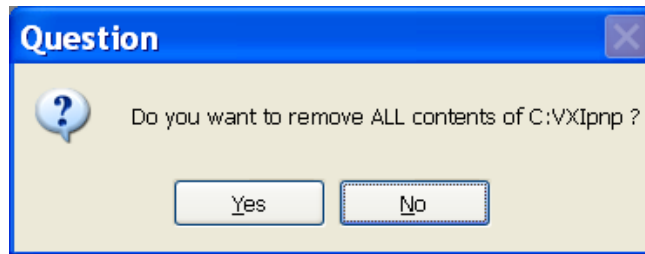
4. Click **Next** in the Welcome screen of TekVISA Cleanup Tool installShield wizard.



5. The following message is displayed. Click **OK** after closing all the TekVISA components.

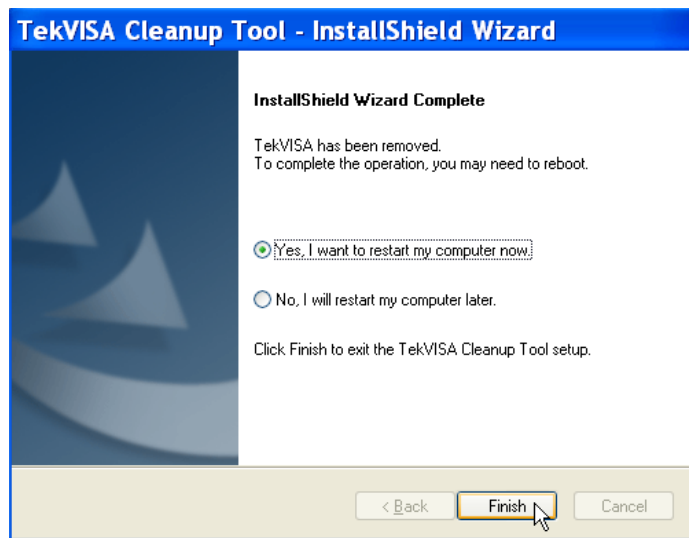


6. Click **Yes** to the following screen.



NOTE. Make sure to exit all the TekVISA tools and VXI-11 components from the system tray.

7. Restart your computer by clicking **Yes** in the below dialog box and click **Finish** to exit the wizard.



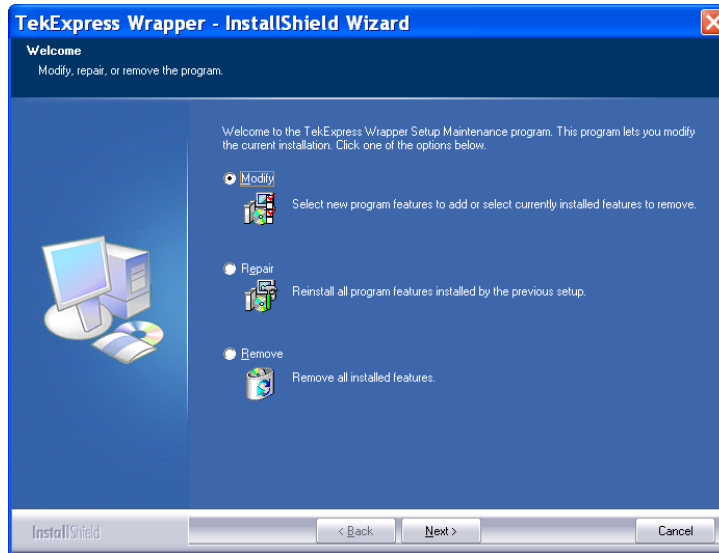
You need to restart the TekExpress installer to continue with the TekExpress installation. Follow the installation steps 1 through 9 in the section TekExpress Installation Procedure. (See page 7.)

Custom Installation

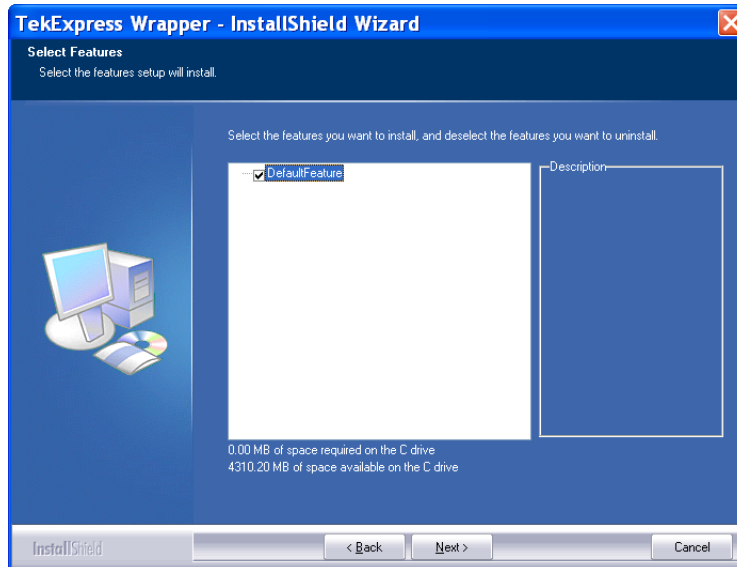
In the **Welcome** screen, you can choose to modify, repair or to uninstall TekExpress components.

Modifying TekExpress Installation

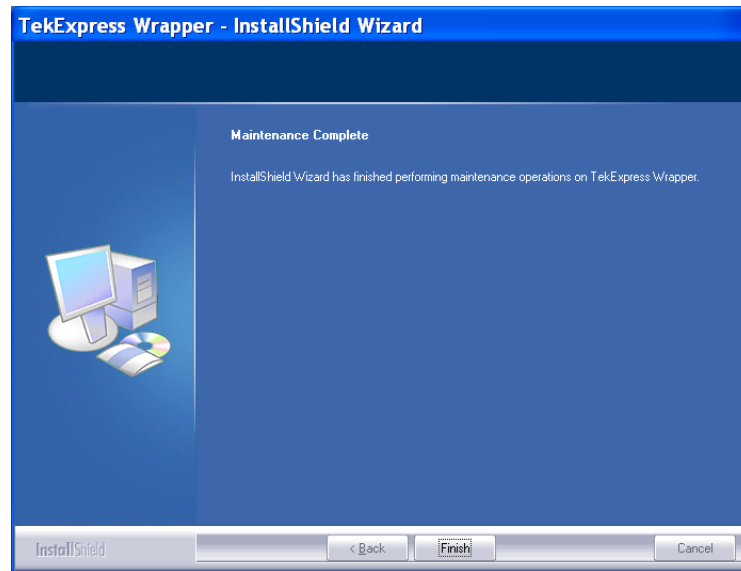
1. Select **Modify** and click **Next**.



2. In the **Select Features** screen, **DefaultFeature** is selected by default. Click **Next** to proceed.

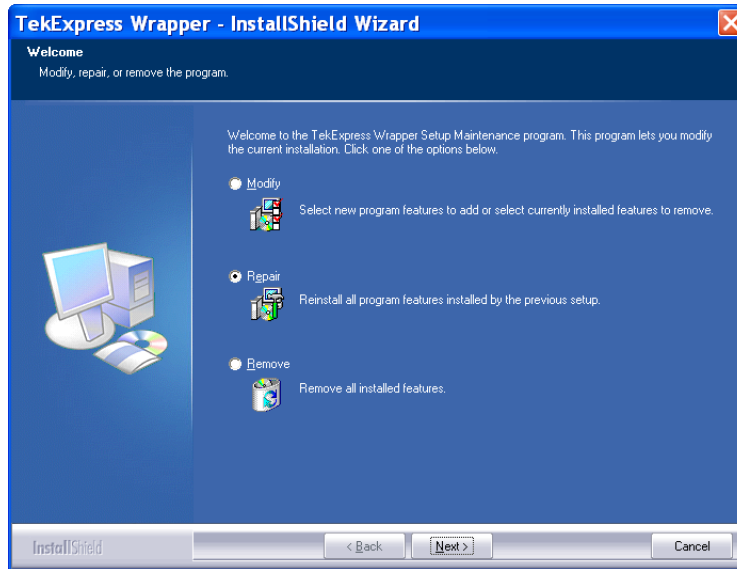


3. Click **Finish** in the **Maintenance Complete** screen.

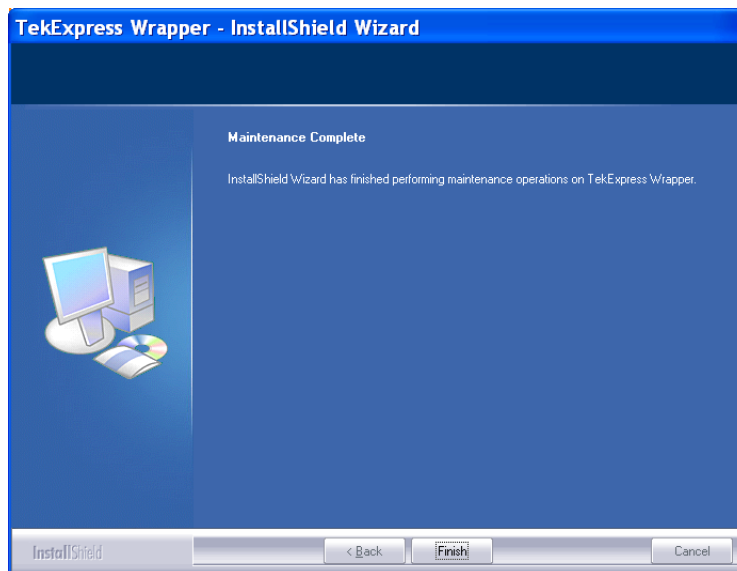


Repairing TekExpress Installation

1. Select **Repair** and click **Next**.

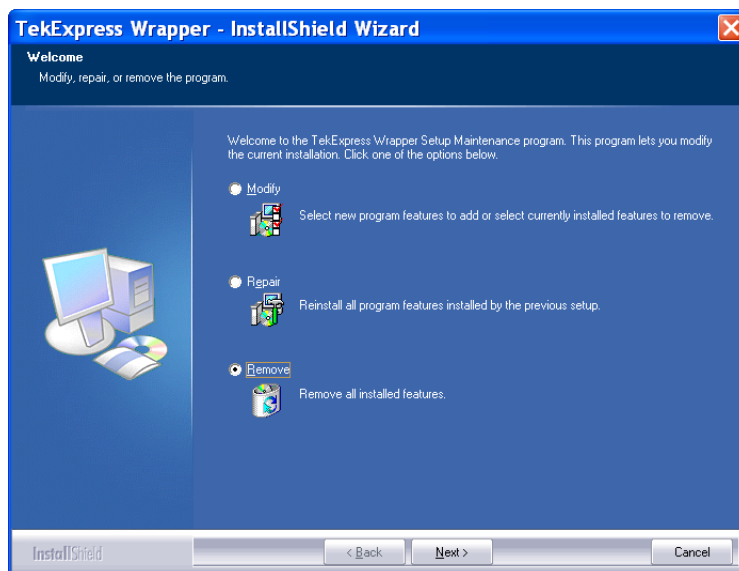


2. Click **Finish** in the **Maintenance Complete** screen.



Removing TekExpress

Select **Remove** and click **Next**.



The Remove option works similar to uninstall process. For more details, refer to Uninstalling TekExpress section.(See page 25, *Uninstalling TekExpress*.)

Launching the Application and Online Help

The application uses a USB dongle that contains the license key. This dongle must be present on the PC hosting the TekExpress application. The application also checks for the `Resources.xml` file located in the `My TekExpress` folder. If this file is not found, an instrument discovery is performed before launching TekExpress. The `Resources.xml` file contains information about the instruments available on the network.

At startup, the application checks for the appropriate license key. If a valid license key is not present, the application switches to the “Demo” mode. If the application fails to detect the dongle, it continues to run in the Demo mode.

To start the application, you can do one of the following:

- Click **Start > Programs > Tektronix > TekExpress > TekExpress SATA**.

- Double-click the icon  on the desktop.

When the application starts, it displays the following splash screen providing launch information. The application also checks for the presence and the validity of the USB dongle.

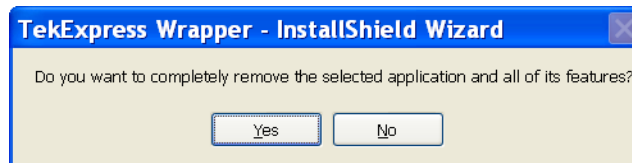


You can view the online help by clicking **Start > Programs > Tektronix > TekExpress SATA > Help**.

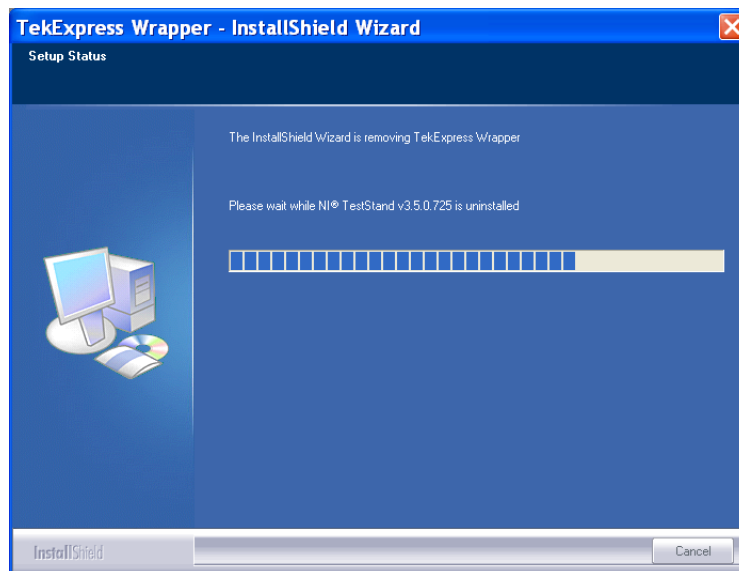
Uninstalling TekExpress

To uninstall the TekExpress software, do the following:

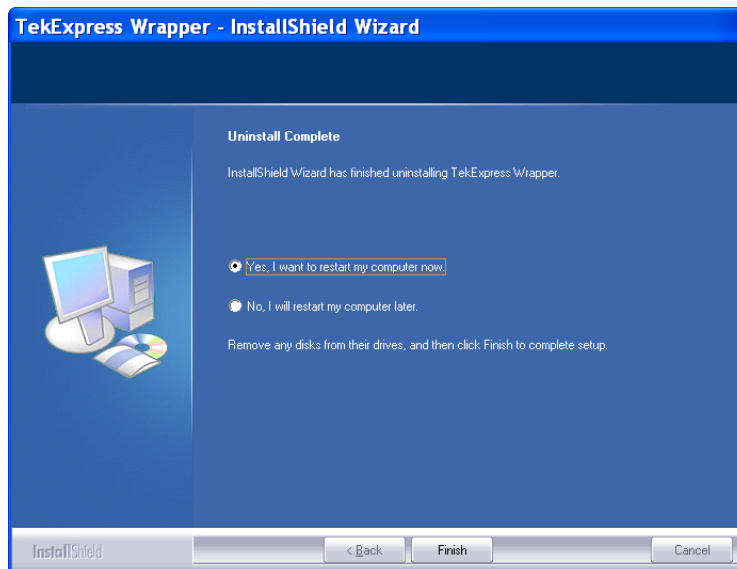
1. From your PC desktop, select **Start > Settings > Control Panel**.
2. Click the **Add or Remove programs** icon.
3. Select **TekExpress Wrapper** from the list and click **Remove**.
4. Click **Yes** in the following dialog box.



The Setup Status screen displays the uninstall progress



5. Choose to restart your computer and click **Finish** in the uninstall complete screen.



You can also uninstall other TekExpress software components using Add or Remove Programs (see the complete list of software components in the TekExpress Installation Procedure).

NOTE. *Uninstalling TekExpress Wrapper removes only the TekExpress component and TestStand Runtime Engine. The other components continue to exist.*

NOTE. *Some of the software components like TekVISA and .NET 2.0 may be used by applications on your system other than TekExpress. Before removing any other TekExpress software components, verify that those components are not used by other software applications.*
